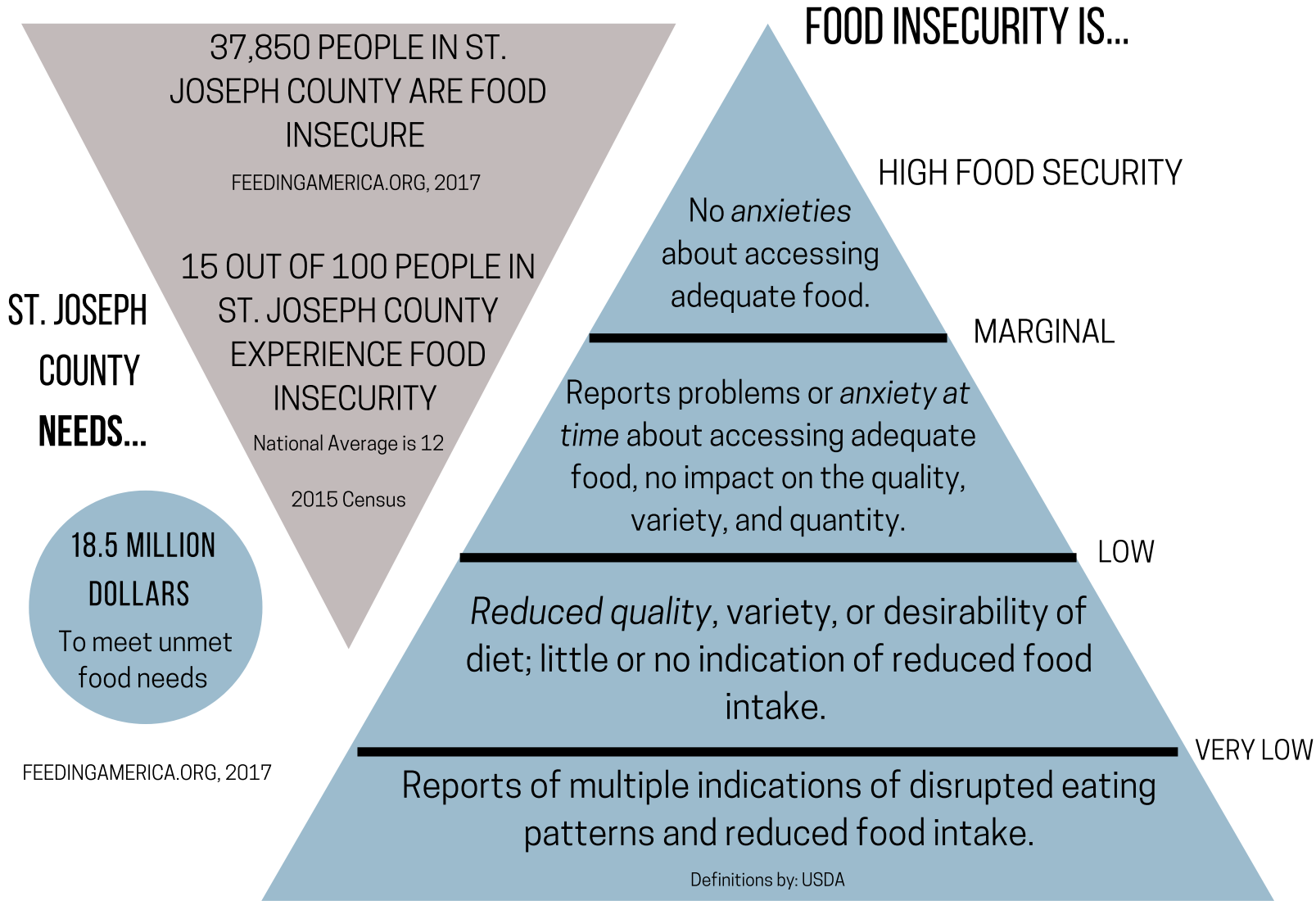


FOOD ACCESS IN ST. JOSEPH COUNTY



FOOD DESERTS ARE...

Urban or rural areas where the availability of affordable, healthy, fresh food is limited.



ST. JOSEPH COUNTY
DEPARTMENT OF HEALTH
Prevent. Promote. Protect.

For more information contact Robin Vida at (574) 245-6749

FOOD ACCESS DEPENDS ON...

- + FINANCIAL CAPACITY
- + PHYSICAL ACCESS
- + KNOWLEDGE OF FOOD RESOURCES

1 in 4 children lives in a food insecure household.



Over 1/2 using N. Indiana Food Bank resources are under 18 or over 60.