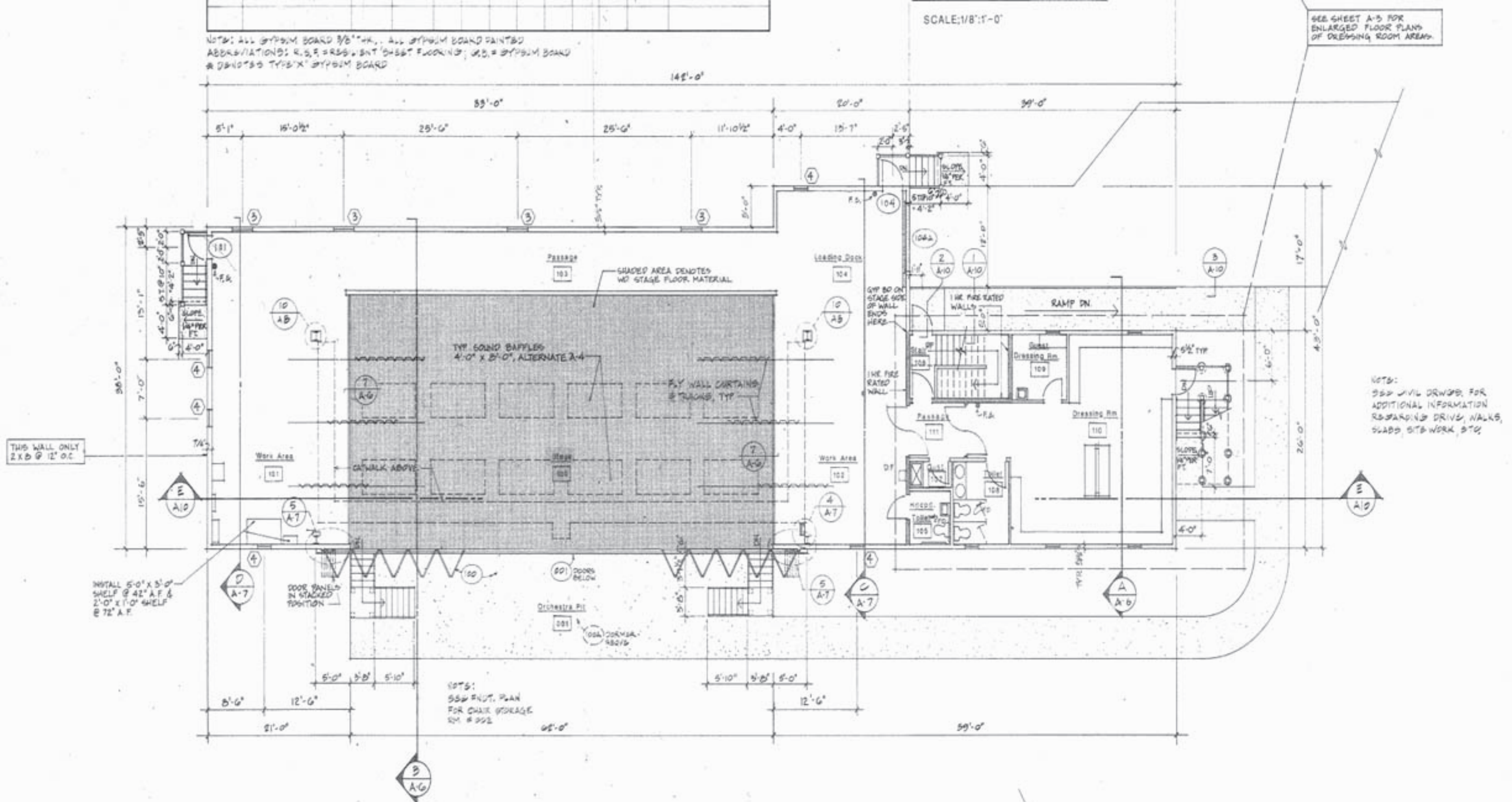


SCALE: 1/8" = 1'-0"

SEE SHEET A-3 FOR ENLARGED FLOOR PLANS OF DRESSING ROOM AREA.

NOTES: ALL GYPSUM BOARD 5/8" TH. ALL GYPSUM BOARD PAINTED  
ABBREVIATIONS: R.S.F. = REINFORCED CONCRETE FLOORING; G.B. = GYPSUM BOARD  
\* DENOTES TYPE 'X' GYPSUM BOARD



# FLOOR PLAN

NOT TO SCALE

1.6  
16.8

